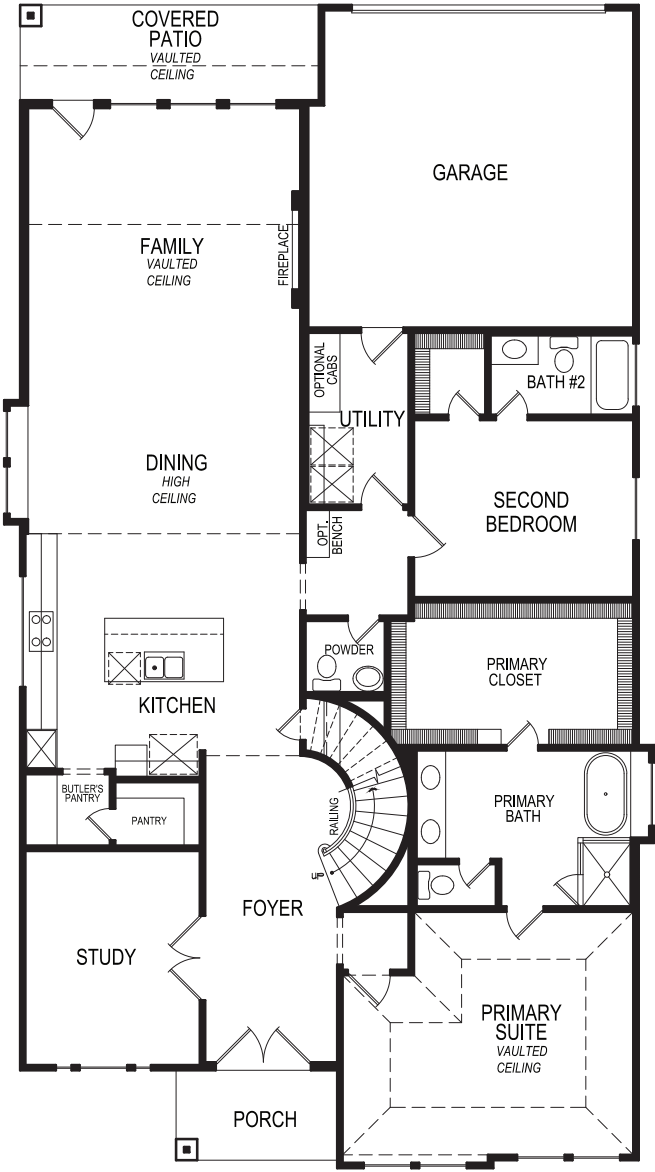
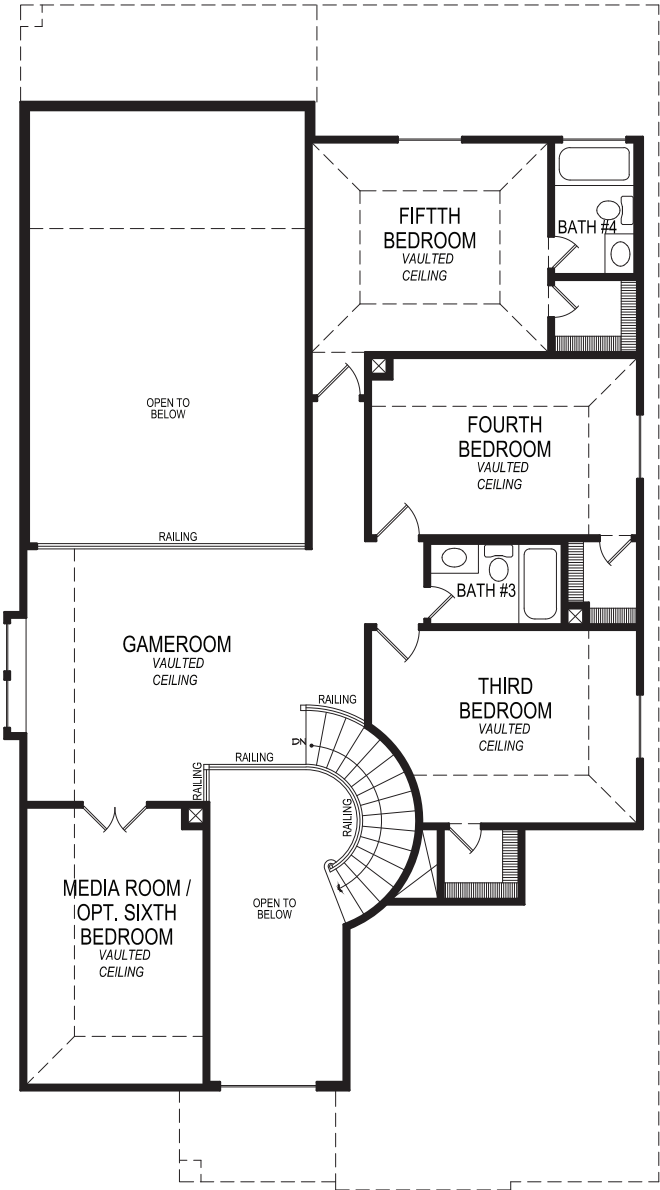


FIRST TEXAS HOMES

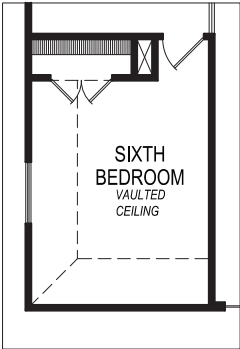
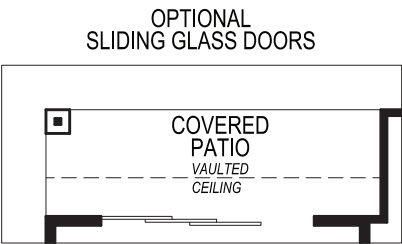
DUKE R | 5  | 4.5  | 2  | 3,675 SQFT



FIRST FLOOR PLAN



SECOND FLOOR PLAN



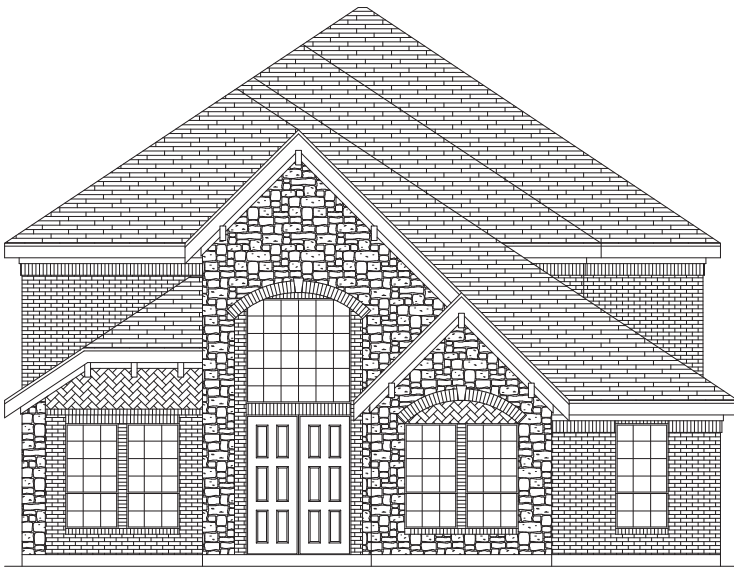
OPTIONAL SIXTH
BEDROOM



ELEVATION A



PREMIUM ELEVATION B



PREMIUM ELEVATION C



PREMIUM ELEVATION D

FIRST TEXAS[®]
HOMES



As part of our ongoing development process aimed at delivering better homes, First Texas Homes reserves the right to make additions or alterations to this plan. This may involve changes to the floor plan layout, elevations, and specifications regarding square footage, bed and bathroom count. For more information or to address any inquiries, please speak with a Sales Consultant.